



13

2022

1

ISO26000

T/CESA 16003-2017

GRI Standards

SDGs

<http://www.goertek.com>

<http://www.cninfo.com.cn>

268

goertekcsr.list@goertek.com

ir@goertek.com

1.

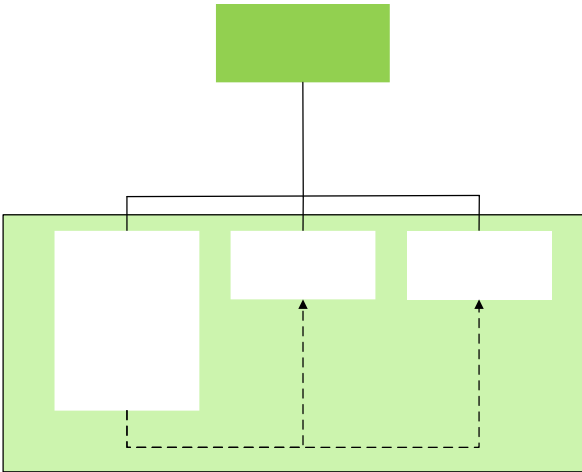
1.1

1.2

1.3

1.4

SDGs	
 <p>1 NO POVERTY</p>	
 <p>3 GOOD HEALTH AND WELL-BEING</p>	
 <p>4 QUALITY EDUCATION</p>	
 <p>6 CLEAN WATER AND SANITATION</p>	
 <p>7 AFFORDABLE AND CLEAN ENERGY</p>	
 <p>8 DECENT WORK AND ECONOMIC GROWTH</p>	
 <p>9 INDUSTRY, INNOVATION AND INFRASTRUCTURE</p>	
 <p>12 RESPONSIBLE CONSUMPTION AND PRODUCTION</p>	



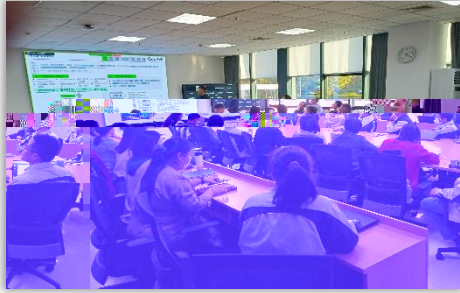
2.4

2.4.1

2.4.2

2.4.3

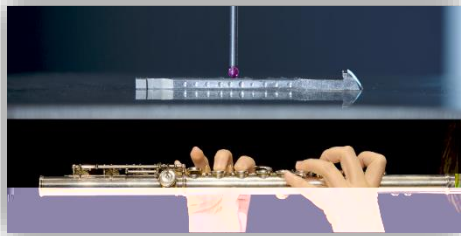
2.5



2.6

2.6.1

2.6.2



3.

3.1

3.2

3.2.1

3.2.2

3.3

3.4

4.2.2

5.

5.1

5.1.2



EHS

2022

458.5

9.63

1.8

GB/T31962-2015

QCVN40:2011/BTNMT 1B COD<150mg/L SS<100mg/L

625.9

/

625.9

17642.7

17642.7

1

3.3

100%

10%

98%

6%

94%

4%

5.2

5.2.1

2022

IECQ QC080000

2009

2022

/

2022

35

SGS TUV

50

QC080000

300

RoHS REACH

65 TSCA

2022

XRF

15

ISO/IEC 17025

CNAS

L4750

12

100%

SCIP

chemSHERPA



5.2.2

1

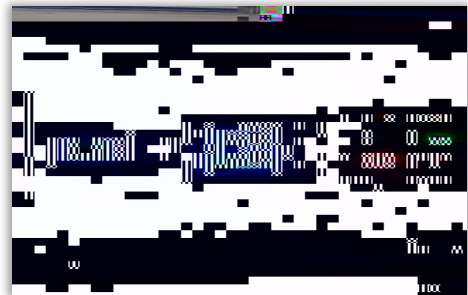
818.37tCO2e



2 : 186.74tCO₂e



3 : 689.75tCO₂e



5.2.3

6.1.3

6.1.4

6.1.5

6.1.6

6.2

6.2.1

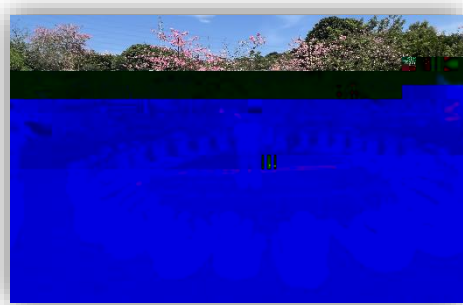
6.2.2



6.3

6.3.1







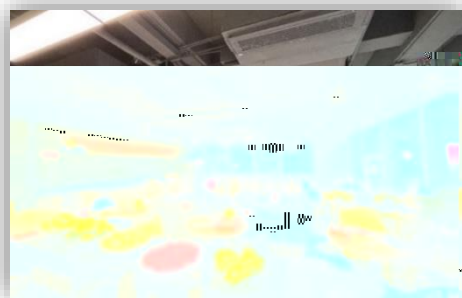
6.3.2



6.3.3



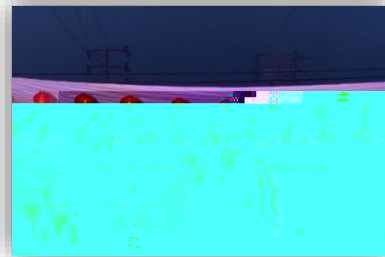
6.3.4



6.3.5



6.3.6



6.3.7

6.3.8

6.4

6.4.1

6.4.2

6.4.3

6.4.4



事故部门

- 2 小时内事故上报↵
- 协助事故调查分析↵
- 事故整改措施落实↵

安全管理部门

- 成立事故调查组↵
- 事故调查分析↵
- 追踪事故整改↵

人力资源部门

- 工伤事故受理↵
- 工伤申报↵
- 工伤处理跟进↵



6.5

7.

7.1



7.2

.

625

8.

GRI Standards

GRI			
GRI 2	2021		
2-1			
2-2			
2-3			
2-4			
2-5			
2-6			
2-7			
2-8			
2-9			
2-10			
2-11			
2-12			

2-26		
2-27		
2-28		
2-29		
2-30		
GRI 3	2021	
3-1		
3-2		
3-3		
GRI 201	2016	
201-1		
201-2		
201-3		
201-4		
GRI 202	2016	
202-1		
202-2		
GRI 203	2016	
203-1		
203-2		
GRI 204	2016	
204-1		

GRI 205 2016		
205-1		
205-2		
205-3		
GRI 206 2016		
206-1		
GRI 207 2019		
207-1		
207-2		
207-3		
207-4		
GRI 301 2016		
301-1		

GRI 305	2016	
305-1	1	
305-2	2	
305-3	3	

403-4		
403-5		
403-6		
403-7		
403-8		
403-9		
403-10		
GRI 404	2016	
404-1		
404-2		
404-3		
GRI 405	2016	
405-1		
405-2		
GRI 406	2016	
406-1		
GRI 407	2016	
407-1		
GRI 408	2016	
408-1		
GRI 409	2016	
409-1		
GRI 410	2016	
410-1		
GRI 411	2016	
411-1		
GRI 413	2016	
413-1		

413-2		
GRI 414	2016	
414-1		
414-2		
GRI 415	2016	
415-1		
GRI 416	2016	
416-1		
416-2		
GRI 417	2016	
417-1		
417-2		
417-3		
GRI 418	2016	
418-1		